



# MONTHLY MEMBERSHIP PROGRESS REPORT

District 323 G2

Results as of: 3/31/2016

GMT: KAMLESH JAIN

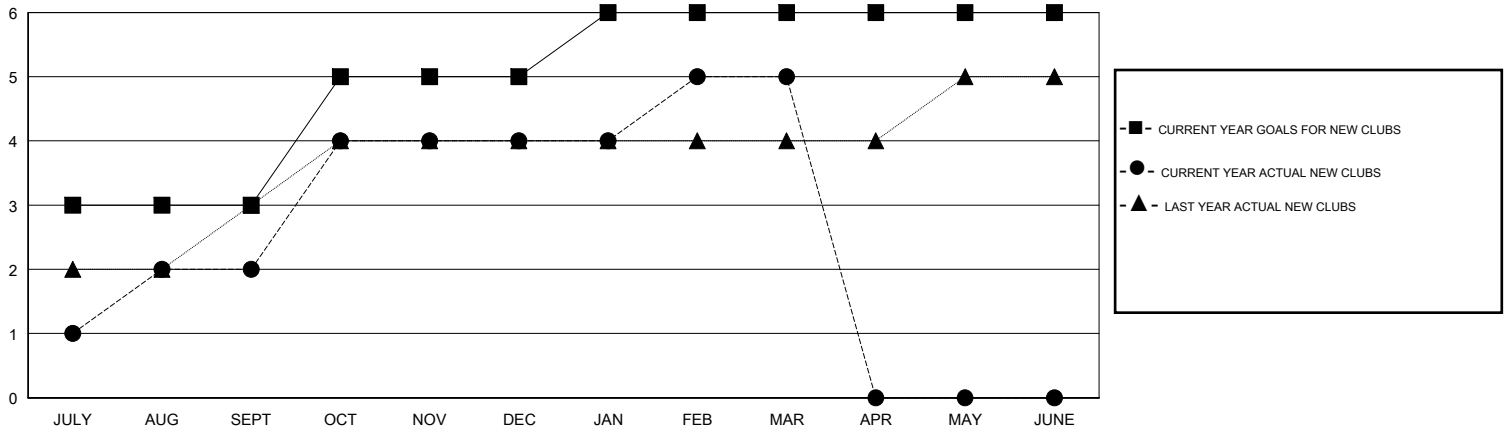
LOCATION INDIA

GMT CA 6

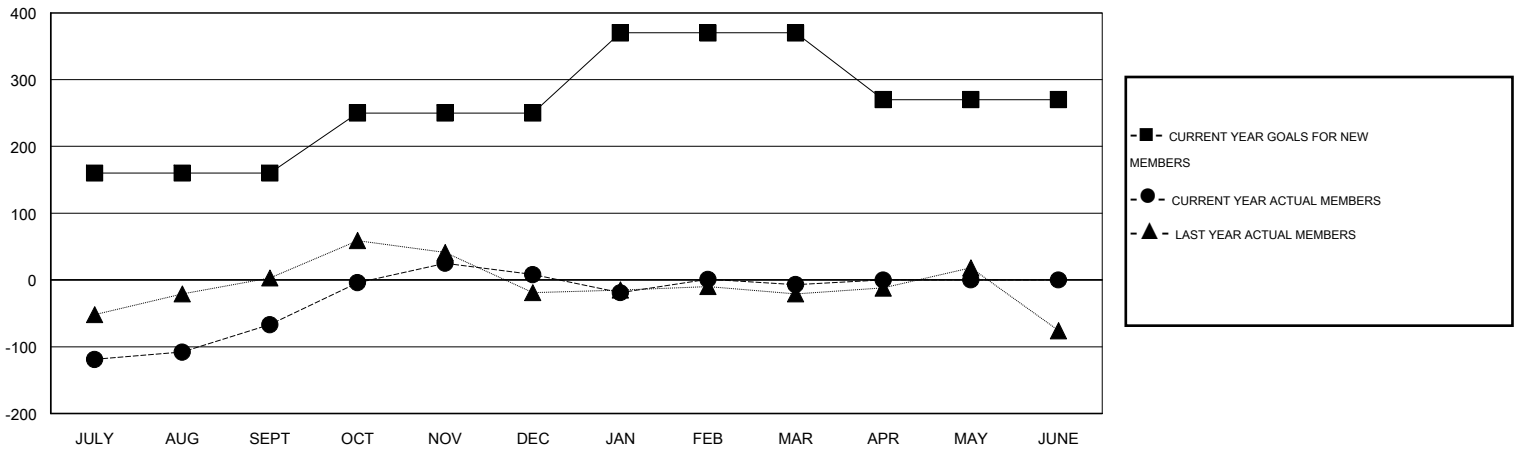
Clubs				
RESULTS FOR 2015-2016				
QUARTER	NEW CLUB GOAL	NEW CLUBS	DROPPED CLUBS	NET GAIN/LOSS
JULY/AUG/SEPT	3	2	0	2
OCT/NOV/DEC	2	2	0	2
JAN/FEB/MAR	1	1	2	-1
APR/MAY/JUNE	0	0	0	0

Members				
RESULTS FOR 2015-2016				
QUARTER	NEW MEMBER GOAL	CHARTER AND NEW MEMBERS ADDED	DROPPED MEMBERS	NET GAIN/LOSS
JULY/AUG/SEPT	160	123	190	-67
OCT/NOV/DEC	90	111	36	75
JAN/FEB/MAR	120	46	61	-15
APR/MAY/JUNE	-100	0	0	0

GOALS AND ACTUAL NEW CLUBS CUMULATIVE



GOALS AND ACTUAL MEMBERS CUMULATIVE



DROPPED CLUBS: 2	
<u>DROPPED MEMBERS</u>	
DECEASED	5
CLUB CANCELLED	2
OTHER	280
<b>TOTAL</b>	<b>287</b>

46 CLUBS OF 110 ADDED 1 OR MORE NEW MEMBERS
<a href="#">CLICK HERE FOR HEALTH ASSESSMENT DATA</a>

<u>GENDER DISTRIBUTION</u>	
MALE	1,773 (74.72%)
FEMALE	600 (25.28%)
<u>FAMILY UNIT MEMBERS</u>	
FAMILY UNIT MEMBERS	686
HEAD OF HOUSEHOLD	315
NON-HEAD OF HOUSEHOLD	371